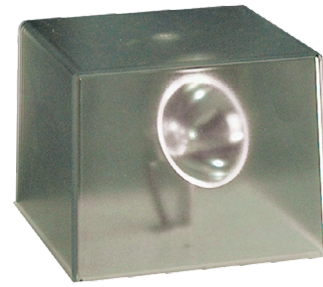


# SMC

## VANDAL REMOTE

Single Lexan Cube

6V, 12V, & 24V Lamps in  
quartz halogen, tungsten or LED

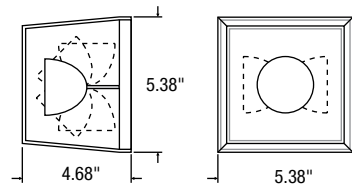


**SP** Approvals:  
CSA Certified to C22.2 #141.15

### DESCRIPTION

The SMC series of vandal resistant remotes provides reliable emergency lighting in applications typically prone to abuse and tampering. The internal, fully adjustable, single or double assembly is completely shielded by the heavy-duty Lexan cube. The one-piece, molded cube is internally finished with an anti-glare texturing. A steel mounting plate provides a solid base for the entire fixture. Available in 6V, 12V and 24V models, utilizing quartz halogen, tungsten or LED lamps.

### DIMENSIONS



### MECHANICAL

- Heavy-duty, one piece, molded Lexan cube lamp assembly shields
- Up to two small, lamp assemblies per cube in a variety of lamp wattages
- Each individual lamp assembly is fully adjustable and aimable
- 20 Gauge steel mounting plate c/w stamped universal spider knockout pattern
- Mounting plate - white powder coat finish standard, other colours optional
- Variety of lamp options:
  - 6VDC, 12VDC or 24VDC
  - Quartz halogen, tungsten or LED lamps

### ORDERING GUIDE – LED

| Series | Number of heads                                  | Voltage                              | Wattage                      | Lamp type | Colour                | Options†             |
|--------|--|--------------------------------------|------------------------------|-----------|-----------------------|----------------------|
| SMC    | 1 - One lamp assembly<br>2 - Two lamp assemblies | 06 - 24 - 6VDC to 24VDC operational  | 4W - 4 watts                 | LR - LED  | WH - White (standard) | TP, WG<br>BK - Black |
|        |  | 12 - 24 - 12VDC to 24VDC operational | 5W - 5 watts                 | LA - LED  | BK - Black            |                      |
|        |  |                                      | 6W - 6 watts<br>7W - 7 watts | LA - LED  |                       |                      |

### ORDERING GUIDE – INCANDESCENT

| Series | Number of heads                                  | Voltage     | Lamp                     | Colour                | Options†             |
|--------|--|-------------|--------------------------|-----------------------|----------------------|
| SMC    | 1 - One lamp assembly<br>2 - Two lamp assemblies | 06V - 6VDC  | See lamp selection chart | WH - White (standard) | TP, WG<br>BK - Black |
|        |  | 12V - 12VDC |                          | BK - Black            |                      |
|        |  | 24V - 24VDC |                          |                       |                      |

### INCANDESCENT LAMP SELECTION

|                           | 6 Volts            | 12 Volts                | 24 Volts      |
|---------------------------|--------------------|-------------------------|---------------|
| <b>PAR18 - Small head</b> |                    |                         |               |
| Quartz halogen            | 08Q, 10Q, 12Q, 20Q | 08Q, 10Q, 12Q, 20Q      | 12Q, 20Q      |
| Tungsten                  | 09T, 18T           | 09T, 12T, 18T           | 09T, 18T      |
| <b>MR16 - Small head</b>  |                    |                         |               |
| Q/MR16 - Quartz MR16      | 08Q, 10Q, 12Q, 20Q | 08Q, 10Q, 12Q, 20Q, 35Q | 12Q, 20Q, 35Q |

† For detailed options descriptions, please consult the options page.